



WOOD MULTI-FUEL AND GAS STOVE RANGE

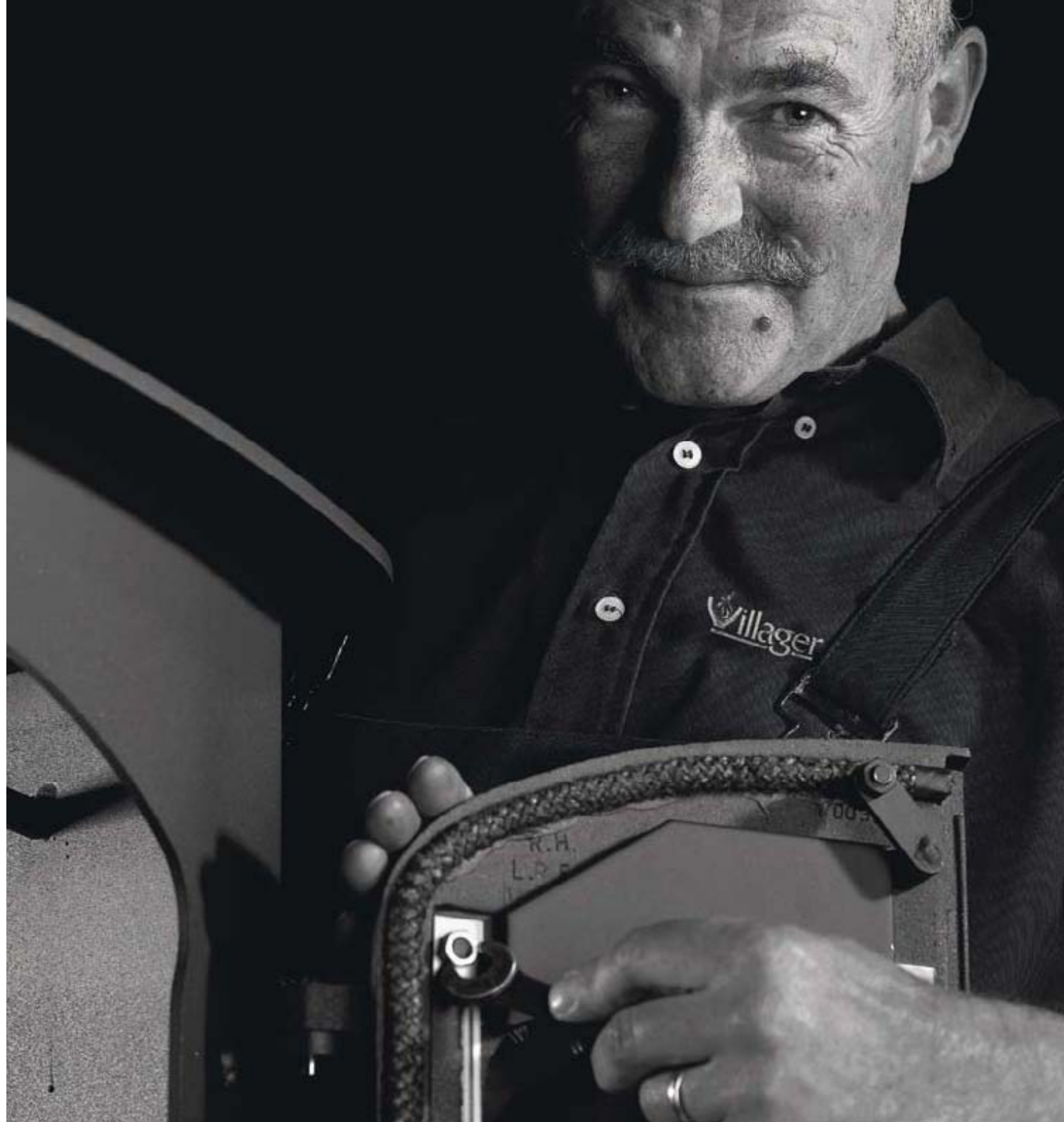
**Villager**

Hand crafted for your hearth & soul

This is John. He's been hand finishing our stoves for over 25 years now. That's over 25 years of ensuring that our stoves meet the strictest standards of construction and safety. Like John, all our staff take a personal pride in creating the very best product they can. Our personal guarantee to you is that a Villager stove is of the highest build quality.

Each stove passes through stringent individual tests and checks before it is allowed to leave our workshop. This is why we know you can be sure that when you buy a Villager stove you buy the best and when we say that the stoves are British-built we mean it. Once the raw material has arrived at our factory, everything else, right down to the door hinge is crafted on site.

When it comes to heating your home efficiently and stylishly, we have over 40 years' experience of setting new standards in excellence and craftsmanship~just ask John.



CONTENTS

MULTI-FUEL STOVES

Chelsea Solo	4
Chelsea Duo	5
Puffin	6
Bayswater	7
Elite Single Door	8
Elite Twin Door	9
Berkley	10

WOODBURNING STOVES

'C'	11
Kitchener	12
BH, BL, Flatmate	13
AH, AL, Flat	14

GAS FIRED STOVES

Charlecote balanced flue	15
Charlecote conventional flue	16
'B' balanced flue	17
'B' conventional flue	18

General Information, Double-Fronted Stoves and Boiler Options	19
Specification tables	20-22

MULTI-FUEL STOVES

All our multi-fuel stoves, with the exception of the 'Puffin', incorporate our advanced cleaner burning 'airwash' system which combines highly efficient fuel combustion with an airflow system to help keep the glass clean and are supplied with a factory fitted riddling grate.

Our range of multi-fuel stoves has been designed for use with a wide variety of manufactured and natural fossil fuels, particularly those listed by HETAS®, whose telephone number is 0845 634 5626.

WOODBURNING STOVES

Designed, built and finished to withstand extremes of temperature, all our woodburning stoves, model, incorporate primary and secondary air vents and a cleaner burning 'airwash' system to help keep the glass clean.

These features, combined with the heavy brick lining and baffle plate found in all models, ensure complete fuel combustion, providing a good and well-balanced heat store.

The large cast-iron doors, specially designed for easy fuel loading, are fitted with high temperature glass panels so that when closed, you can enjoy your living fire in complete safety and of course keep the fire in overnight.

GAS FIRED STOVES

The popularity of our gas fired stoves is mainly due to the operating simplicity, convenience, traditional good looks and build quality. The realistic flame effect created by our gas burner units, which have been developed in our own research and development department, has been achieved with no loss of fuel efficiency. Efficiency is measured by the amount of input gas that is converted to heat, and we believe our efficiency figures are among the best. All the calculations we quote have been established by Gastec, an Independent European Test House.

In addition to our gas fired stoves for conventional chimneys, we have a range of balanced flue stoves, also known as room sealed (R.S.) stoves, which vent directly through an appropriate outside wall. You will find details of how these operate in the "Important information for your safety and enjoyment" section at the back of this brochure.

All Villager gas stoves must be run with the doors closed.

All Villager gas stoves come supplied with either push button Piezo ignition or infrared remote control, both of which eliminate the need for matches and electricity ensuring you still have heat in the event of a power failure. Many of our gas fired stoves can be operated by a hand held remote control. All our gas stoves have been photographed alight. On the high setting more flame is seen. When LPG is used the flame tends to burn with a brighter yellow colour.

All our gas fired stoves are CE approved.

ELECTRIC STOVES

We also manufacture a range of electric stoves, full details of which are shown in our separate Electric Stoves Brochure.



CHELSEA SOLO Multi-Fuel Stove

Heat Output	5kW maximum
Average area heated	56 to 70 cubic metres maximum
Flue Outlet	Top or rear (interchangeable) 127mm (5") damperless flue collar
Standard Features	Brick lined firebox Riddling grate c/w ashpan Cleaner burning airwash system 1 x Primary air control 2 x Secondary air controls
Optional Extras	Drop in grate conversion plate for woodburning Metal ashcarrier with lid 127mm (5") flue damper and handle High and low canopies (removable)
Boiler Options	Heat output 3.53kW (12,000BTU) approx Available in stainless steel

HETAS® approved
CE approved



- 1 Chelsea shown with optional High Canopy
- 2 Chelsea shown with optional Low Canopy
- 3 Chelsea Flat

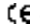
With its large single glass giving greater view of the fire, this small and elegant stove will make you feel cosy all winter through.





CHELSEA DUO Multi-Fuel Stove

Heat Output	5kW maximum
Average area heated	56 to 70 cubic metres maximum
Flue Outlet	Top of rear (interchangeable) 127mm (5") damperless flue collar
Standard Features	Brick lined firebox Riddling grate c/w ashpan Cleaner burning airwash system 1 x Primary air control 2 x Secondary air controls
Optional Extras	Fine mesh spark guard Drop in grate conversion plate for woodburning Metal ashcarrier with lid 127mm (5") flue damper and handle High and low canopies (removable)
Boiler Options	Heat output 3.53kW (12,000BTU) approx Available in stainless steel

HETAS® approved
 approved



- 1 Chelsea shown with optional High Canopy
- 2 Chelsea shown with optional Low Canopy
- 3 Chelsea Flat

This twin door version of the Chelsea gives a more traditional look to our most popular multi-fuel stove.

PUFFIN Multi-Fuel Stove

Heat Output	4kW maximum
Average area heated	42 to 56 cubic metres maximum
Flue Outlet	Top only. In place of a flue collar, the Puffin has a 127mm (5") Damperless flue ring
Standard Features	Brick lined firebox Static grate c/w ashpan 1 x Primary air control
Optional Extras	Metal ashcarrier with lid
Boiler Option	Heat output 2.64kW (9,000BTU) approx Available in stainless steel

The baby in our multi-fuel range is ideal for boats, caravans, mobile homes and small rooms.





BAYSWATER Multi-Fuel Stove

Heat Output	6-7kW maximum
Average area heated	63 to 98 cubic metres maximum
Flue Outlet	Top or rear (interchangeable) 152mm (6") flue collar
Standard Features	Brick lined firebox Riddling grate c/w ashpan Cleaner burning airwash system 2 x Primary air controls 2 x Secondary air controls
Optional Extras	Fine mesh spark guard Drop in grate conversion plate for woodburning Metal ashcarrier with lid 152mm (6") flue damper and handle
Boiler Option	Bayswater High and Low Heat output 5.86kW (20,000BTU) approx Available in stainless steel Bayswater Flat There is no boiler available for this model

HETAS® approved
CE approved



- 1 Bayswater High
- 2 Bayswater Low
- 3 Bayswater Flat

Beautiful, traditionally designed stoves, with advanced control features, that make the most efficient use of fuel~and look good too.

Now available in single door Solo version.

ELITE SINGLE DOOR Multi-Fuel Stove

Heat Output	9kW maximum
Average area heated	100 to 126 cubic metres maximum
Flue Outlet	Top or rear (interchangeable) 152mm (6") flue collar
Standard Features	Brick lined firebox Riddling grate c/w ashpan Cleaner burning airwash system 2 x Primary air controls 2 x Secondary air controls
Optional Extras	Drop in grate conversion plate for woodburning Metal ashcarrier with lid 152mm (6") flue damper and handle
Boiler Option	Elite High and Elite Low Heat output 5.86kW (20,000BTU) approx Available in stainless steel Elite Flat Accommodates a smaller boiler with a heat output of 2.9kW (10,000BTU) approx

HETAS® approved
CE approved



1 Elite Single Door High
2 Elite Single Door Low
3 Elite Twin Door Flat

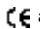
All Elite stoves can burn either wood or fossil fuels and conversion is easily achieved with a drop-in plate.





ELITE TWIN DOOR Multi-Fuel Stove

Heat Output	9kW maximum
Average area heated	100 to 126 cubic metres maximum
Flue Outlet	Top or rear (interchangeable) 152mm (6") flue collar
Standard Features	Brick lined firebox Riddling grate c/w ashpan Cleaner burning airwash system 2 x Primary air controls 2 x Secondary air controls
Optional Extras	Fine mesh spark guard Drop in grate conversion plate for woodburning Metal ashcarrier with lid 152mm (6") flue damper and handle
Boiler Option	Elite High and Elite Low Heat output 5.86kW (20,000BTU) approx Available in stainless steel
	Elite Flat Accommodates a smaller boiler with a heat output of 2.9kW (10,000BTU) approx

HETAS® approved
 approved



- 1 Elite Single Door High
- 2 Elite Single Door Low
- 3 Elite Twin Door Flat

Incorporating all the advanced features found in our multi-fuel stoves, all Elite stoves have the added benefit of greatly increased heat output with only a small increase in physical size.

BERKLEY Multi-Fuel Stoves

Heat Output	7kW maximum
Average area heated	74 to 98 cubic metres maximum
Flue Outlet	Top or rear (interchangeable) 152mm (6") flue collar
Standard Features	Brick lined firebox Static grate c/w ashpan Full frontal airwash system 2 x Primary air controls 1 x Secondary air control
Optional Extras	Fine mesh spark guard Metal ashcarrier with lid 152mm (6") flue damper and handle
Boiler Option (20,000BTU) approx	Heat output (on low and flat models) 5.86kW Available in stainless steel Berkley Low Integral has a larger capacity factory fitted steel boiler heat output is increased to 7.62kW (26,000BTU) maximum

CE approved



1 Berkley Low
2 Berkley Flat

The Berkley is a popular 7kW, two door multifuel stove with modern linear design.

The Berkley range includes a low integral model with a built-in boiler to combine elegance with functionality.





‘C’ Woodburning Stove

Heat Output	5kW maximum
Average area heated	70 cubic metres maximum
Flue Outlet	Top or rear (interchangeable) 152mm (6") flue collar
Standard Features	Brick lined firebox 2 x Primary air controls 1 x Secondary air control
Optional Extras	Fine mesh spark guard 152mm (6") flue damper and handle
Boiler Option	Heat output 4.39kW (15,000BTU) approx Available in stainless steel

 approved

This is our smallest woodburning stove, and it is made for burning wood only ~ there is no solid fuel conversion available.

The ‘C’ Woodburner is available in the Low Canopy version as shown or new Flat Top version

KITCHENER Woodburning Stove

Heat Output	8kW maximum
Average area heated	84 to 112 cubic metres maximum
Flue Outlet	Top only – left or right (interchangeable) 152mm (6") flue collar
Standard Features	Brick lined firebox Precise door mounted airwash system 2 x Primary air controls 2 x Secondary air controls
Optional Extras	Fine mesh spark guard Solid fuel grate conversion kit 152mm (6") flue damper and handle
Boiler Option	Heat output 2.9kW (10,000BTU) approx Available in stainless steel

CE approved



This stove has it all~style, efficiency and a comfortable working height~making it ideal for the kitchen. Perfect for creating a cosy kitchen environment in the depths of winter.



BH, BL, & FLATMATE Woodburning Stoves

Heat Output	8kW maximum
Average area heated	84 to 112 cubic metres maximum
Flue Outlet	Top or rear (interchangeable) 152mm (6") flue collar
Standard Features	Brick lined firebox Precise door mounted airwash system 2 x Primary air controls 2 x Secondary air controls
Optional extras	Fine mesh spark guard Solid fuel grate conversion kit 152mm (6") flue damper and handle
Boiler Option	BH & BL Models Heat output 2.64kW (9,000BTU) approx With a larger capacity boiler, heat output is increased to 5.86kW (20,000BTU) Available in stainless steel Flatmate Heat output 2.9kW (10,000BTU) approx Available in stainless steel

HETAS® approved
CE approved



- 1 BH
- 2 BL
- 3 Flatmate

These are our mid-range and most popular woodburning stoves. Primarily for burning wood, a solid fuel grate conversion kit is available as an extra for those wishing to have the flexibility of burning either fuel.

AH, AL & A FLAT Woodburning Stoves

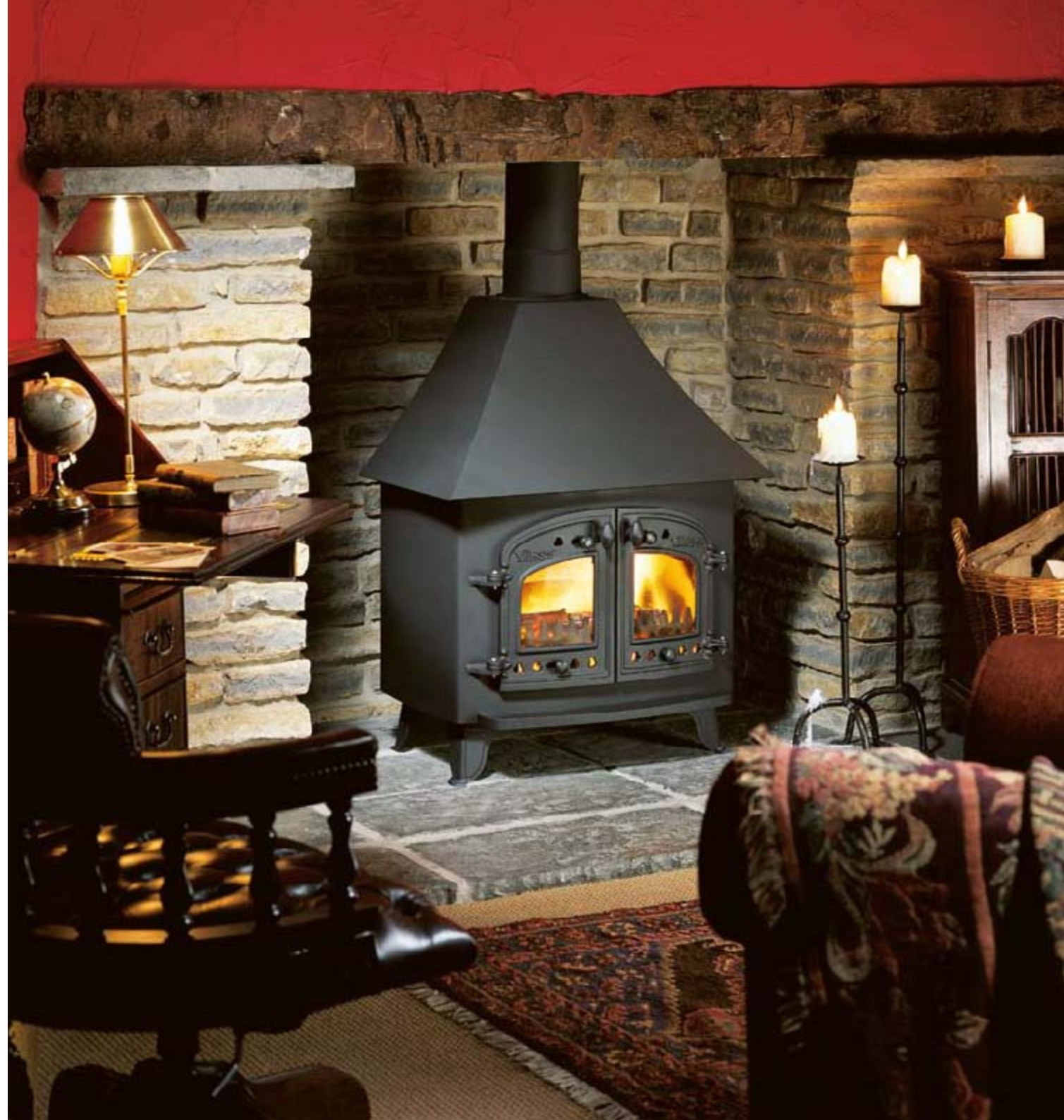
Heat Output	14kW maximum
Average area heated	196 cubic metres maximum
Flue Outlet	Top or rear (interchangeable) for 'A' flat with top flue, use centre outlet only 152mm (6") flue collar
Standard Features	Brick lined firebox Precise door mounted airwash system 2 x Primary air controls 2 x Secondary air controls
Optional Extras	Fine mesh spark guard Solid fuel grate conversion kit 152mm (6") flue damper and handle
Boiler Option approx	AH & AL - Heat output 8.79kW (30,000BTU) 'A' Flat - 2.9kW (10,000BTU) approx Available in stainless steel AHI & ALI - Have a larger capacity factory fitted steel boiler, heat output 13.18kW (45,000BTU) approx

HETAS® approved
CE approved



- 1 AH
- 2 AL
- 3 A Flat

The largest stoves in our woodburning range are ideal for warming up those long winter nights. The canopied options are available with an integral built-in boiler, combining great design with function.





CHARLECOTE **BALANCED FLUE** Gas Stove

Gas Supply	Natural (mains)	L.P. (bottled gas)
Net heat input	4.0kW	4.3kW
Net heat output	3.16kW	3.24kW
Net fuel efficiency	79%	
Average area heated	43.7 cubic metres	
Flue Outlet	Rear flue only	
Optional extras	A balanced flue extension kit is available to extend the rear flue to 800mm. A 45° angled flue collar is available to enable the stove to be sited in a corner.	
Fuel Effect	Log only	

The Charlecote Balanced Flue stove is supplied as a low canopy, rear flue outlet only. A terminal guard and 500mm telescopic flue are supplied as standard.

All Villager gas stoves are  approved

No chimney? Then the balanced flue option is the one for you. This stove can be sited against any suitable outside wall. Such flexibility is married to visual appeal, with a log fuel effect and real flames.

CHARLECOTE CONVENTIONAL FLUE Gas Stove

Gas Supply	Natural (mains)	L.P. (bottled gas)
Net heat input	4.4kW	4.3kW
Net heat output (top flue)	3.28kW	3.30kW
Net heat output (rear flue)	3.34kW	3.35kW

Net fuel efficiency 74 to 77%

Average area heated 46 cubic metres

Flue Outlet 127mm (5") top or rear
to be specified when ordering

Optional extras Infrared battery remote control

The Charlecote is supplied as a standard flat topped model.

High or Low canopies are available as an optional extra. They are simply positioned on the flat top and held firmly in place by their own weight.

Fuel Effect Coal only

All Villager gas stoves are CE approved



- 1 Charlecote shown with optional High Canopy
- 2 Charlecote shown with optional Low Canopy
- 3 Charlecote Flat

We have combined the convenience of gas fuel with a traditionally designed stove incorporating a realistic coal effect.





'B' BALANCED FLUE Multi-Fuel Stove

Gas Supply	Natural (mains)	L.P. (bottled gas)
Net heat input	5.5kW	5.7kW
Net heat output	4.78kW	4.95kW
Net fuel efficiency	87%	
Average area heated	67.9 cubic metres	
Flue Outlet	Rear flue only	

The 'B' Balanced flue stove is supplied as a standard flat topped model. A terminal guard and 500mm telescopic flue are supplied as standard.

Optional Extras High or Low canopies are available as an optional extra. They are simply positioned on the flat top and held firmly in place by their own weight. A balanced flue extension kit is available to extend the rear flue to 800mm. A 45° angled flue collar is available to enable the stove to be sited in a corner.

Fuel Effect Coal only

All Villager gas stoves are CE approved



- 1 'B' Balanced Flue shown with optional High Canopy
- 2 'B' Balanced Flue shown with optional Low Canopy
- 3 'B' Balanced Flue Flat

No chimney? Then the balanced flue option is the one for you. This stove can be sited against any suitable outside wall. Such flexibility is married to visual appeal, with a coal effect and real flames.

'B' CONVENTIONAL FLUE Gas Stoves

Gas Supply	Natural (mains)	L.P. (bottled gas)
Net heat input	6.8kW	6.8kW
Net heat output (top flue)	5.1kW	5.1kW
Net heat output (rear flue)	4.96Kw	4.96kW
Net fuel efficiency	72 to 75%	
Average area heated	72 cubic metres	
Flue Outlet	127mm (5") top or rear to be specified when ordering	
Optional Extras	Infrared remote control High or Low canopies are available as an optional extra. They are simply positioned on the flat top and held firmly in place by their own weight. The 'B' stove is supplied as a standard flat topped model.	
Fuel Effect	Coal only	
All Villager gas stoves are	CE approved	



- 1 'B' Gas shown with optional High Canopy
- 2 'B' Gas shown with optional Low Canopy
- 3 'B' Gas Flat

We have combined the convenience of gas fuel with a traditionally designed stove incorporating a realistic coal effect.



GENERAL INFORMATION

Every installation has its own special requirements. We therefore suggest that, before making a final decision, you talk with your Villager dealer who will be happy to help.

To ensure the highest standards, all these stoves are made from high quality steel plate and cast iron components sourced from carefully selected and monitored foundries.

One of the most important aspects in choosing a stove that appeals to you, is making sure it provides the right level of heat output in relation to the room size. As a guide to help you work out how much heat you are likely to require, we have included the following calculation formula:

$$\text{Length} \times \text{Width} \times \text{Height of room} = \text{Space in cubic metres.}$$

$$\text{Space in cubic metres} \div 14 = \text{kW heat required.}$$

A stove with a higher output can be used if it is to be run with a lower fuel level. With a little experimenting, you will quickly find the fuel loading that is right for your comfort. A small increase in the heat output may be required depending on the number of windows, doors and the level of insulation there is in the room.

WOODBURNING AND MULTI FUEL STOVES

Most woodburning and multi-fuel stoves can be run with the doors open or closed. To enjoy an open fire in safety we can provide a spark guard for most models, which is available as an optional extra. It is worth remembering that, with the doors closed, stoves can burn fuel up to 60% more efficiently than open fires, making them a very economical and fuel-efficient source of heat. Where a hot water boiler can be fitted, we have included the heat output capacity. More information on the provision of hot water and central heating can be found in the "Hot Water & Central Heating" section. A special multi-purpose stove operating tool is supplied as standard with all our stoves.

Note: Where the HETAS® logo is shown against an appliance this indicates that it has been approved as "Safe and Fit for Purpose". At this level HETAS® testing and approval does not cover heat output ratings. The kW ratings shown are maximum outputs, claimed from our own test work, by ourselves as manufacturers.

DOUBLE FRONTED STOVES

Villager double fronted stoves are ideal for homes and pubs, clubs, hotels and restaurants etc. that have, or wish to create a central chimney setting.

We offer the following range of double fronted versions of our popular woodburning stoves: AH Wood, AL Wood, 'A' Flat Wood, BH Wood, BL Wood and Flatmate.

These stoves are built to the same high standards set for all our stoves. Please note that double fronted stoves cannot be fitted with a boiler and that the flue opening diameter 152mm (6") is always in the centre of the top surface.

All 'A' models are for woodburning only, while the two 'B' models and the Flatmate can be converted from woodburning to multi-fuel, with the use of a drop-in grate conversion.

If you are interested in a double fronted stove, then please talk to your Villager dealer as these stoves are built to order.

Optional extras: 2 x Fine mesh spark guards.
2 x 'B' grate conversion kits.

Special features: All models have 152mm (6") diameter central flue opening.

The 'A' models are for woodburning only.

There are no hotplates on the 'A' Flat or Flatmate.



HOT WATER & CENTRAL HEATING

Most Villager wood and multi fuel stoves can be fitted with an add-in boiler for heating hot water. Some models can be supplied with a factory fitted high output boiler to run.

A proper survey should be carried out by a qualified heating engineer, because there are many factors affecting the boiler's performance, e.g. the number of windows, doors and the degree of insulation present. You will need to take into account the capacity of your hot water storage tank and the pipe run required to link the system. Always seek professional advice before making a final decision.

The following tables list the Villager models and factory fitted or add-in boiler options available and the outputs to water for these.

Integral steel boiler options

	Btu	
AHl	45,000	13.18
ALl	45,000	13.18
Berkley Low Integral	26,000	7.62

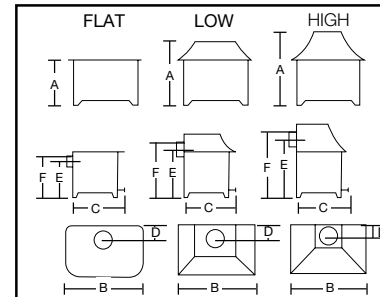
Add-in stainless steel boiler options

	Btu	kW
AH & AL Wood	30,000	8.79
A Flat Wood	10,000	2.9
BH & BL Wood	9,000	2.64
BH & BL Wood	20,000	5.86
Flatmate	9,000	2.9
Kitchener	9,000	2.64
C Flat Wood	12,000	3.53
C Low Wood	15,000	4.39
Bayswater High & Low	20,000	5.86
Berkley Low & Flat	20,000	5.86
Chelsea Duo/Solo	12,000	3.53
Puffin 2	9,000	2.64
Elite High - Twin/Single	20,000	5.86
Elite Low - Twin/Single	20,000	5.86
Elite Flat - Twin/Single	10,000	2.9

PLEASE NOTE: The fireplace settings in this brochure have been specially created for the photography and it is possible that one or two of them may not comply with current local building regulations in your area. Please check with your Villager dealer to make sure your fireplace and chimney meet the required regulations. Because we are continually developing our products, we reserve the right to change the specification without prior notice. Your Villager dealer will be pleased to bring you up to date with developments. Villager® is the registered trade mark of Arada Ltd.

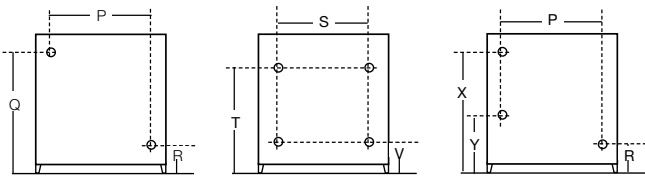
TABLE OF DIMENSIONS

MULTI FUEL STOVES



	Flue Diameter	Overall Height	Overall Width	Overall Depth (including sill)	Back of stove to centre of top flue outlet	Height to centre of rear flue outlet	Height to clear rear flue outlet	HETAS® Approved Safe & Fit for Purpose	Packed Weight	Heat Output kW Maximum	Average Cubic Metres Heated	Flue Outlet Entry Points (Top)	Flue Outlet Entry Points (Rear)	Flue Outlet Entry Points (Interchangeable)	Riddle Grate	Static Grate
		A *	B	C	D	E	F									
Chelsea Solo/Duo+ High Canopy	127mm	* 726mm	468mm	334mm	92mm	385mm	460mm	▲	84kg	5kW	56-70	●	●	●	●	
Chelsea Solo/Duo+ Low Canopy	127mm	* 635mm	468mm	334mm	92mm	385mm	460mm	▲	82kg	5kW	56-70	●	●	●	●	
Chelsea Solo/Duo	127mm	* 480mm	452mm	334mm	92mm	385mm	460mm	▲	74kg	5kW	56-70	●	●	●	●	
Puffin	127mm	525mm	337mm	355mm	77mm	N/A	N/A		52kg	4kW	42-56	●				●
Bayswater High	152mm	* 842mm	583mm	354mm	103mm	456mm	543mm	▲	104kg	6-7kW	63-98	●	●	●	●	
Bayswater Low	152mm	* 687mm	583mm	354mm	114mm	456mm	542mm	▲	100kg	6-7kW	63-98	●	●	●	●	
Bayswater Flat	152mm	* 540mm	601mm	360mm	137mm	425mm	512mm	▲	95kg	6-7kW	63-98	●	●	●	●	
Elite High - Single/Twin	152mm	* 937mm	690mm	380mm	116mm	551mm	635mm	▲	115kg	9kW	100-126	●	●	●	●	
Elite Low - Single/Twin	152mm	* 778mm	687mm	380mm	128mm	551mm	635mm	▲	111kg	9kW	100-126	●	●	●	●	
Elite Flat - Single/Twin	152mm	* 601mm	666mm	380mm	138mm	484mm	570mm	▲	106kg	9kW	100-126	●	●	●	●	
Berkley Low Integral	152mm	* 715mm	585mm	375mm	120mm	592mm	675mm		109kg	7kW	74-98	●	●	●		●
Berkley Low	152mm	* 715mm	585mm	375mm	120mm	466mm	555mm		102kg	7kW	74-98	●	●	●		●
Berkley Flat	152mm	* 540mm	593mm	375mm	137mm	410mm	495mm		98kg	7kW	74-98	●	●	●		●

Boiler tapping positions



	P	Q	R	S	T	V	X	Y
Chelsea Solo/Duo	250mm	412mm	207mm	~	~	~	~	~
Puffin	135mm	480mm	250mm	~	~	~	~	~
Bayswater High & Low	380mm	475mm	230mm	~	~	~	~	~
Elite High & Low	378mm	582mm	256mm	~	~	~	~	~
Elite Flat	460mm	382mm	240mm	~	~	~	~	~
Berkley Low Integral	~	~	~	435mm	475mm	105mm	~	~
Berkley Low & Flat	380mm	417mm	175mm	~	~	~	~	~

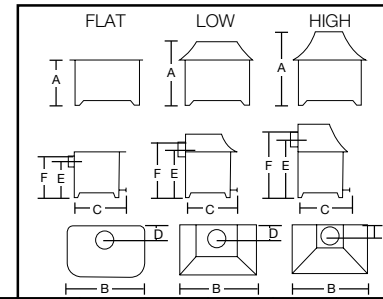
▲ HETAS® Approved Safe & Fit for Purpose

* This measurement includes the height of the legs (where supplied) and is to the top of the stove only, when using top flue please add 100mm for the flue collar.

All measurements are approximate.

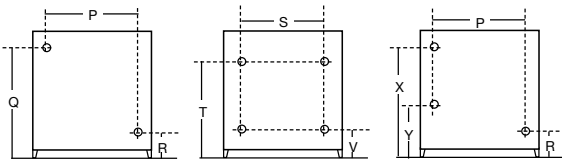
TABLE OF DIMENSIONS

WOOD BURNING STOVES



	Flue Diameter	Overall Height	Overall Width	Overall Depth (including sill)	Back of stove to centre of top flue outlet	Height to centre of rear flue outlet	Height to clear rear flue outlet	HETAS® Approved Safe & Fit for Purpose	Packed Weight	Heat Output kW Maximum	Average Cubic Metres Heated	Flue Outlet Entry Points (Top)	Flue Outlet Entry Points (Rear)	Flue Outlet Entry Points (Interchangeable)	Optional Static Grate Available	No Grate Available
		A *	B	C	D	E	F									
C Wood - Low	152mm	* 630mm	468mm	335mm	110mm	498mm	585mm		68kg	5kW	70	●	●	●		●
C Wood - Flat																
Kitchener	152mm	* 688mm	600mm	350mm	136mm	N/A	N/A		87kg	8kW	84-112	●			●	
BH Wood	152mm	* 839mm	585mm	350mm	104mm	458mm	540mm	▲	97kg	8kW	84-112	●	●	●	●	
BL Wood	152mm	* 685mm	585mm	350mm	111mm	458mm	540mm	▲	92kg	8kW	84-112	●	●	●	●	
Flatmate	152mm	* 572mm	600mm	350mm	136mm	458mm	540mm	▲	90kg	8kW	84-112	●	●	●	●	
AHI	152mm	* 934mm	745mm	485mm	116mm	810mm	890mm		143kg	14kW	196	●	●	●	●	
ALI	152mm	* 804mm	745mm	485mm	132mm	684mm	770mm		138kg	14kW	196	●	●	●	●	
AH Wood	152mm	* 934mm	745mm	485mm	116mm	810mm	890mm	▲	137kg	14kW	196	●	●	●	●	
AL Wood	152mm	* 804mm	745mm	485mm	132mm	684mm	770mm	▲	133kg	14kW	196	●	●	●	●	
A Flat Wood (Top flue entry, use centre outlet only)	152mm	* 595mm	737mm	485mm	135mm	481mm	565mm	▲	123kg	14kW	196	●	●	●	●	

Boiler tapping positions



	P	Q	R	S	T	V	X	Y
C Wood	260mm	512mm	226mm	~	~	~	~	~
Kitchener	371mm	504mm	316mm	~	~	~	~	~
BH & BL Wood	380mm	~	170mm	~	~	~	495mm	320mm
Flatmate	371mm	504mm	316mm	~	~	~	~	~
AHI & ALI Wood	~	~	~	542mm	558mm	180mm	~	~
AH Wood	384mm	690mm	230mm	~	~	~	~	~
AL Wood	384mm	690mm	235mm	~	~	~	~	~
A Flat Wood	489mm	367mm	195mm	~	~	~	~	~

AH Wood Double	152mm	* 920mm	734mm	715mm	N/A	N/A	N/A		159kg			●				●
AL Wood Double	152mm	* 800mm	745mm	715mm	N/A	N/A	N/A		144kg			●				●
'A' Flat Wood Double	152mm	* 585mm	750mm	715mm	N/A	N/A	N/A		140kg			●				●
BH Wood Double	152mm	* 835mm	604mm	662mm	N/A	N/A	N/A		127kg			●			●	
BL Wood Double	152mm	* 685mm	590mm	662mm	N/A	N/A	N/A		124kg			●			●	
Flatmate Double	152mm	* 575mm	608mm	662mm	N/A	N/A	N/A		116kg			●			●	

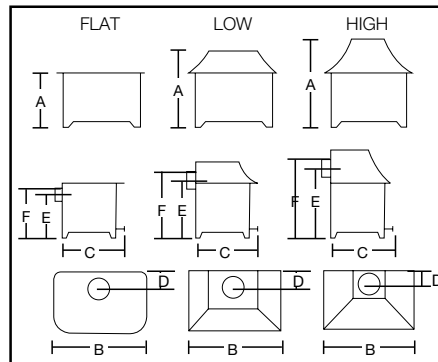
▲ HETAS® Approved Safe & Fit for Purpose

* This measurement includes the height of the legs (where supplied) and is to the top of the stove only, when using top flue please add 100mm for the flue collar.

All measurements are approximate.

TABLE OF DIMENSIONS

GAS FIRED STOVES



	Flue Diameter	Overall Height	Overall Width	Overall Depth (including sill)	Back of stove to centre of top flue outlet	Height to centre of rear flue outlet	Height to clear rear flue outlet	Packed Weight	Heat Input Natural Gas (Mains)	Heat Input L.P. Gas	Net Heat Output Natural Gas (Mains)	Net Heat Output L.P. Gas	Average Cubic Metres Heated	Net Efficiency
		A *	B	C **	D	E	F							
Charlecote Balanced Flue	155mm	590mm	470mm	295mm	N/A	478mm	562mm	45kg	4.0kW	4.3kW	3.16kW	3.24kW	43.7	79%
Charlecote Conventional Flue + High Canopy	127mm	* 701mm	470mm	** 340mm	82mm	353mm	425mm	50kg	4.4kW	4.3kW	3.34kW (Rear) 3.28kW (Top)	3.35kW (Rear) 3.30kW (Top)	46	74-77%
Charlecote Conventional Flue + Low Canopy	127mm	* 608mm	470mm	** 340mm	82mm	353mm	425mm	48kg	4.4kW	4.3kW	3.34kW (Rear) 3.28kW (Top)	3.35kW (Rear) 3.30kW (Top)	46	74-77%
Charlecote Conventional Flue Flat Top	127mm	* 456mm	452mm	** 340mm	82mm	353mm	425mm	40kg	4.4kW	4.3kW	3.34kW (Rear) 3.28kW (Top)	3.35kW (Rear) 3.30kW (Top)	46	74-77%
'B' Balanced Flue + High Canopy	155mm	908mm	586mm	347mm	N/A	467mm	540mm	89kg	5.5kW	5.7kW	4.78kW	4.95kW	67.9	87%
'B' Balanced Flue + Low Canopy	155mm	750mm	586mm	347mm	N/A	467mm	540mm	85kg	5.5kW	5.7kW	4.78kW	4.95kW	67.9	87%
'B' Balanced Flue Flat Top	155mm	570mm	560mm	347mm	N/A	467mm	540mm	69kg	5.5kW	5.7kW	4.78kW	4.95kW	67.9	87%
'B' Conventional Flue + High Canopy	127mm	* 908mm	586mm	** 347mm	80mm	474mm	542mm	82kg	6.8kW	6.8kW	4.96kW (Rear) 5.1kW (Top)	4.96kW (Rear) 5.1kW (Top)	72	72-75%
'B' Conventional Flue + Low Canopy	127mm	* 750mm	586mm	** 347mm	80mm	474mm	542mm	78kg	6.8kW	6.8kW	4.96kW (Rear) 5.1kW (Top)	4.96kW (Rear) 5.1kW (Top)	72	72-75%
'B' Conventional Flue Flat Top	127mm	* 570mm	560mm	** 347mm	80mm	474mm	542mm	62kg	6.8kW	6.8kW	4.96kW (Rear) 5.1kW (Top)	4.96kW (Rear) 5.1kW (Top)	72	72-75%

* On Top flue versions of these models, please add 40mm to overall height to allow for the flue ring.
 ** On Rear flue versions of these models, please add 50mm to overall Depth to allow for the Draught Diverter.
 All measurements are approximate.

Safety zone

Our stoves are highly efficient appliances giving off convected, conducted and radiated heat. All the surfaces of the stoves, except the controls on gas fired stoves, become hot in use and must not be touched or have any combustible objects placed near them. Adequate precautions should always be taken to prevent children, the elderly, the infirm and pets from coming into contact with the surfaces of the stoves.

Please note that, as an added safety measure, all HETAS® approved stoves must be capable of being bolted to the hearth. Drilled holes in the specially designed base plate on the legs supplied with our stoves, allow for this.

For added safety, we recommend that distances between combustible materials and your stove are those set out in document 'J' of the building regulations.

You can obtain a copy from your local authority, or contact the Solid Fuel Association, on **0845 601 4406**, for an information booklet.

Lining the chimney

Chimney lining is generally a good idea, and is essential if there is a poor flue pull, if the chimney has an above average internal size or if there is leaking through any mortar joints. The size of the flue liner should be at least the size of the stove flue: 5" or 6" depending on the model being installed.

Changing the height of a stove

If you wish to change the leg height on a multi-fuel stove, it may require your commissioning fitter to drill the appropriate holes in the base of the stove. Bolt on legs for woodburning stoves can be altered and are available in lengths of 90mm (3½"). 130mm (5¼") and 250mm (9⅞").

Important ventilation requirements

The English and Scottish Building Regulations specify that the following fixed ventilation must be provided when installing Woodburning and Multi-fuel appliances.

Appliances rated under 5kW: no ventilation required

Appliances rated over 5kW: for each kW of rated output above 5kW, 550 sq.mm (0.85 sq.ins) per kW.

Example: for a stove rated at 8kW the ventilation required is 3 x 550 sq.mm = 1650 sq.mm (2.56 sq.ins). This can be achieved by using a standard ventilation brick. Your Villager dealer should be able to give advice regarding the correct size brick that you may require.

Gas stoves

All our gas stoves are rated below 7kW input, therefore there are no requirements for any fixed ventilation to be provided.

All models installed using the top flue option require an air gap at the back, between the wall and the stove of at least 50mm(2"). On all rear flue models this gap is automatically provided by the draft diverter attached to the back of the stove. The reason for this gap is to allow the T.T.B. (Thermal Trip Breaker) to function properly. The T.T.B. is a heat sensor and is fitted as standard so that, should the chimney become restricted or blocked and the stove fail to vent correctly, the gas supply is automatically cut off.

Conventional gas stove or balanced flue?

A conventionally flued stove takes its air from the room for combustion before the exhausted gases are released up the chimney.

A balanced flue stove must be vented directly through a suitable outside wall. It has a completely enclosed flue of two concentric ducts running to the outside. The outer duct draws in fresh air for combustion while the inside duct carries out the exhaust gases.

The flue terminal is such that both ducts are subjected to the same air pressures. They are not affected by any changes in wind conditions leaving the fire burning safely at all times. However, it is important that the location chosen has good air access and is not too close to any window or door where venting gasses may blow back into the room.

Installation

The installation and commissioning of all gas fired stoves must be carried out by a CORGI registered gas fitter. For information about CORGI registered gas fitters in your area, please call CORGI on **0800 111999**

Changing gas type

A CORGI registered engineer can easily convert all the current models. A kit is available to do this. Our earlier models can also be converted, but please contact us for details as some need to be factory converted.

90° flume option

If you wish to vent vertically from the rear of a woodburner or multi-fuel stove supplied with a 152mm(6") diameter flue outlet, you can achieve this by using a 90° flume available from your Villager dealer. Please note: you will need to drill both the flume collar and the back of the stove prior to bolting it in place and make provision for cleaning the chimney by providing an inspection hatch.



WHAT TO BURN

Wood

Most types provided it is properly seasoned. This means dry wood with a moisture content below 20% that is well, but not too tightly packed into the fire box. The more moisture there is in the wood, the more it will smoke and possibly cause tar to build up in the chimney. Not only that but it will produce less heat. If the fire is too loosely packed more air will circulate and a faster, less economical burn rate result.

Peat

Only to be used in turf or brick form, and the moisture content must be low.

Solid Fuels

Your Villager dealer or local fuel supplier will be able to advise you, or contact HETAS® on **0845 634 5626**

Please note:

When burning manufactured or natural smokeless fuels, remove the ash every day.

PETROLEUM BASED INDUSTRIAL FUELS SHOULD ALWAYS BE AVOIDED.

NEVER BURN PLASTICS.



All Bayswater, Chelsea Duo/Solo and Elite models are fitted with a specially designed grate that can be riddled externally with the fire burning and the doors closed, leaving the ash to collect under the grate in the ashpan provided. As an accessory, we can supply a metal ashcarrier with its own lid, making ash removal quick, easy, clean and safe. No fuss, no mess.

Useful contact information

National Fireplace Association

Tel: **0121 288 0050**
Fax: 0870 130 6747
Website: www.nfa.org.uk
e-mail: enquiries@nfa.org.uk

Promotional body for the fire, stove and fireplace industry. Technical information leaflets on fireplace related subjects are available.

Solid Fuel Association

Tel: **0845 601 4406**
Fax: 01773 834351
Website: www.solidfuel.co.uk
e-mail: sfa@solidfuel.co.uk

Promotes the benefits of domestic solid fuel heating and provides a range of services to both public and private sectors.

CORGI

Tel: **0800 915 0480**
Fax: 0870 401 2600
Website: webmaster@corgi-group.com
e-mail: enquiries@corgi-gas.com
The council for registered gas installers.

National Association of Chimney Engineers

Tel: **01526 322555**
Fax: 01526 323181
Website: www.nace.org.uk
e-mail: info@nace.org.uk

Representing the installers of all forms of chimney relining and maintenance.

National Association of Chimney Sweeps

Tel: **01785 811732**
Fax: 01785 811712
Website: www.nacs.org.uk
e-mail: nacs@chimneyworks.co.uk

The authoritative body on chimney and flue maintenance.

The Society of British Gas Industries (SBGI)

Tel: **01926 334357**
Fax: 01926 450459
Website: www.sbgi.org.uk
e-mail: mail@sbgi.org.uk

The society's overall aim is to promote a thriving UK gas industry.

British Flue & Chimney Manufacturers' Association

Tel: **0118 940 3416**
Fax: 0118 940 6258

Representing the manufacturers of factory made flue and chimney products.

HETAS®

Tel: **0845 634 5626**
Website: www.hetas.co.uk
e-mail: j.lake@blueyonder.co.uk

Official body recognised by government to approve solid fuel domestic appliances.

Villager Stoves has reproduced these details from information supplied and cannot accept responsibility for the products or services provided.

Guarantee

THREE YEAR 'FIREGUARD' GUARANTEE

All Villager stoves are covered by our 3 year 'Fireguard' guarantee.
Full details of which are packed with every stove.



Hand crafted for your hearth & soul

Millwey Industrial Estate, Axminster, Devon EX13 5HU
Telephone 01297 35596 Facsimile 01297 35900 e-mail stoves@villager.co.uk www.villager.co.uk

Your local dealer: